



LED Aviation Obstacle Light

Salient Features:

- Low Intensity Type-B
- Very low power consumption
- Zero Maintenance
- Quick Investment return
- Inbuilt Day-Night switch
- Total Water & dust tight fitting
- Wide operational voltages in both AC & DC versions
- Integrated cable terminal box with Polyamide gland
- Patent applied design

Specifications:

- ICAO Annex14 Volume-1 Third edition July1999 Chapter 6
- Low Intensity Type-B compliance as per ICAO
- Tested as per IS at Si'Tarc Govt. Instituted NABL accredited lab

Photometry:

- Intensity >45Cd
- Light output-Aviation RED
- All around horizontal radiation pattern
- Vertical divergence upto 15deg
- Ultra high bright AIGAP technology LEDs
- Expected life of 1,00,000 burning hours

Electrical Characteristics:

- Multi redundant circuits
- Power consumption 5watts max
- Wide voltage operation (70-270V AC and 20-60V DC)
- Input surge protection and Class II EMI filter
- Reverse polarity protected for DC

Mechanical Characteristics:

- LM-6 Aluminium housing
- Aviation Red UV stabilized PP powder coated
- UV stabilized PC Lens
- IP66 degree of protection
- - 10 to +55 deg operation
- Integrated bird spike
- Integrated IP66 terminal box
- 3 / 4" BSP threaded bottom fixing hub



For further details please see our detailed technical specification sheets.

RAY DYNAMICS, 15/6, GKS Nagar, Pappanaicken Palayam, Coimbatore - 641 037. Tamil Nadu, India.

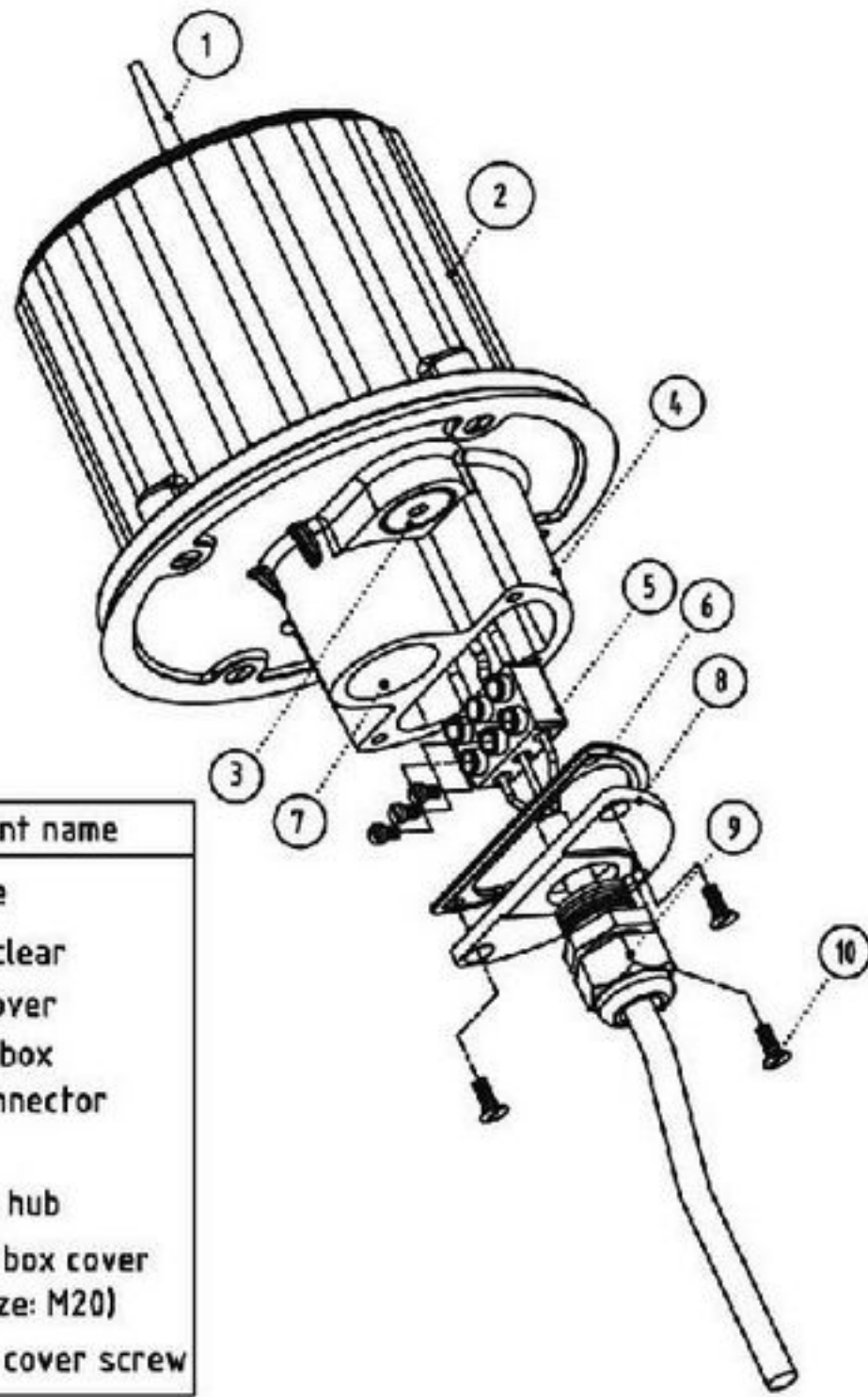
Mobile : 98940 79576, 98946 79576. Fax : + 91 422 2380070. E-Mail : sales@raydynamics.com [http// : www.raydynamics.com](http://www.raydynamics.com)

LED Aviation Obstacle Light performance parameter and dimensional details

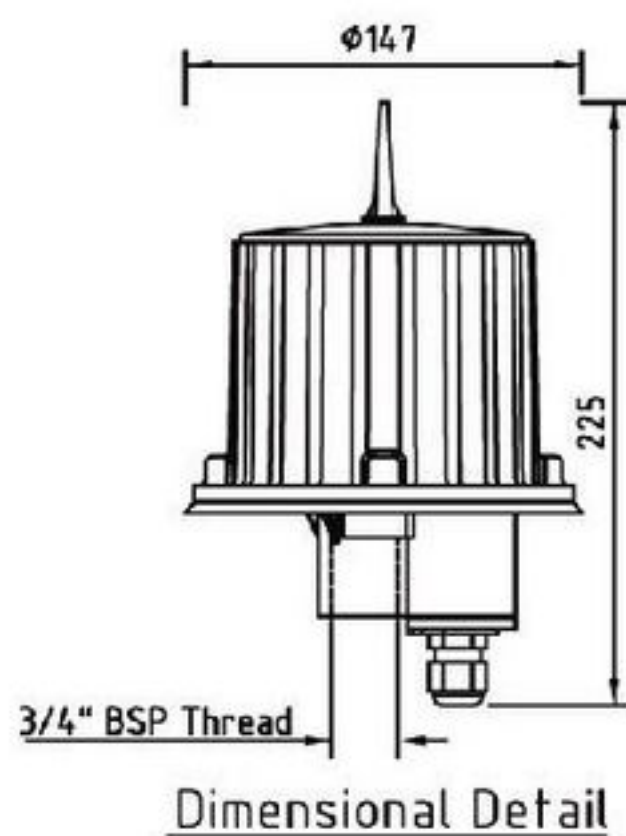
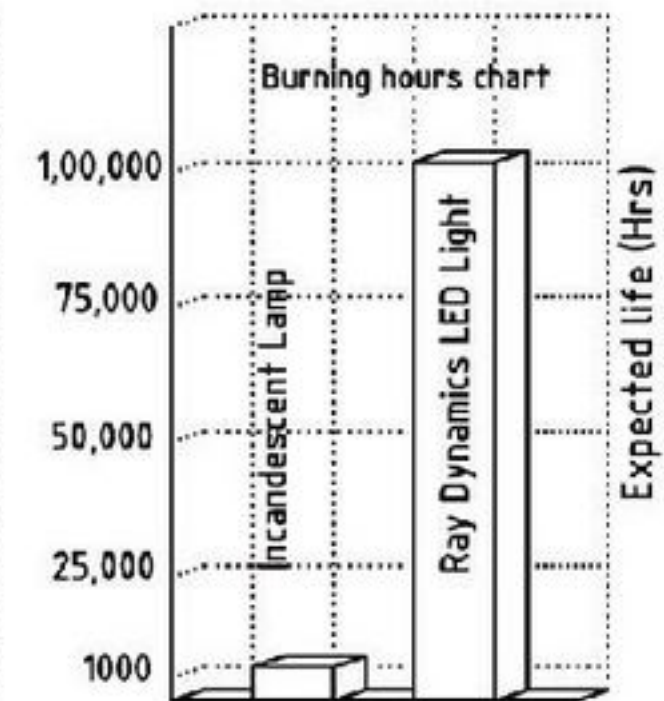
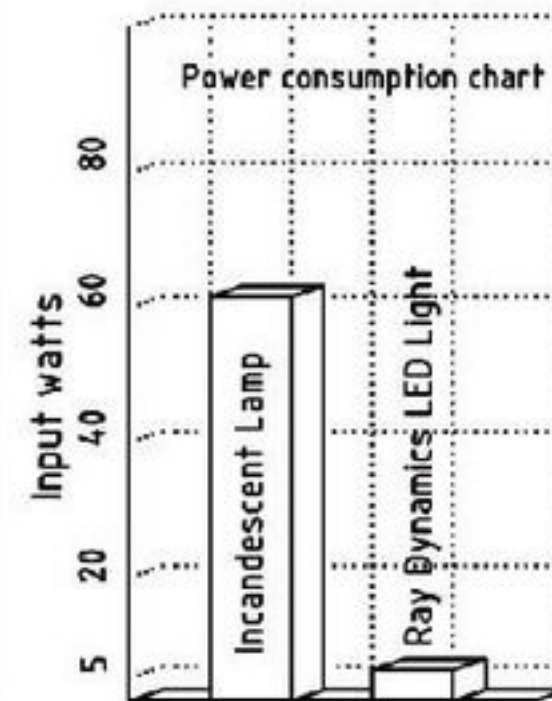
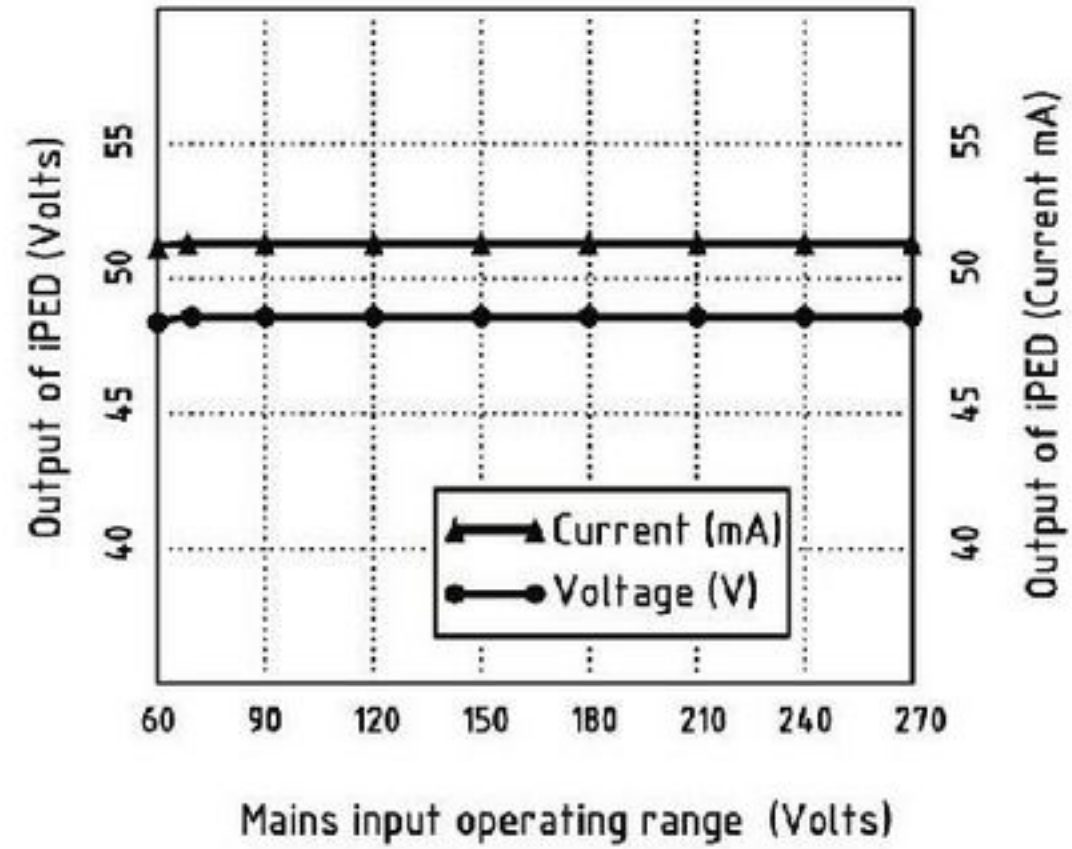
Model Number : LIT32-UI

Voltage : 230 Volts AC

Standard label / installation of Ray Dynamics LED Aviation Obstacle Light

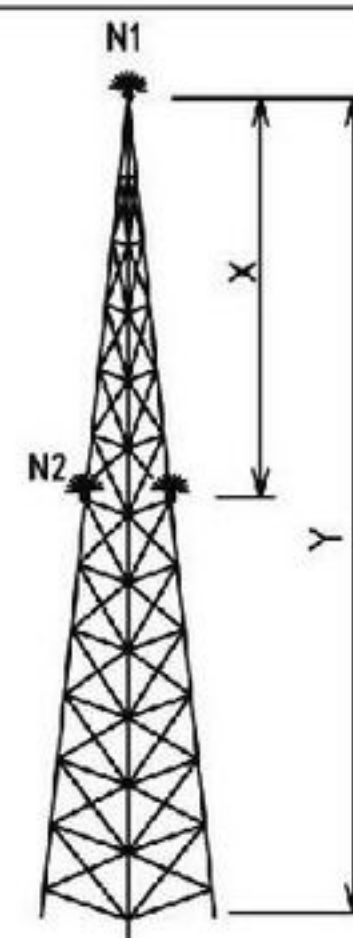


PartNo	Component name
1	Bird spike
2	PC dome clear
3	Sensor cover
4	Terminal box
5	3 way connector
6	Gasket
7	Mounting hub
8	Terminal box cover
9	Gland (Size: M20)
10	Terminal cover screw



Dimensional Detail

All dimensions are in mm
 (Note: Technical Specification given are subject to change without prior notice)



Lighting tall structures*

$$\text{Number of lights} = N = \frac{Y \text{ (meters)}}{45 \text{ (m)}}$$

$$\text{Lamp spacing} = X = \frac{Y}{N} \leq 45\text{m}$$

*As per ICAO Annex 14 Vol-I low intensity Aviation obstacle light directive



RAY DYNAMICS 15/6, GKS Nagar, Pappanaicken palayam, Coimbatore-641 037, Tamil nadu, India
 Mob : 0 98946 79576, 0 98940 79576, Fax: +91 422 2380070, Email: sales@raydynamics.com

**SPECIFICATIONS OF RAY DYNAMICS MAKE LOW INTENSITY TYPE-B LED AVIATION
OBSTACLE LIGHT 230V AC**

Physical Charecteristics	
Make	RAY DYNAMICS
Housing Material	Aluminium LM-6 Grade
Housing Colour	Aviation Red/Yellow PP powder coated
Dome	Polycarbonate U.V stabilized optical grade suitable for outdoor exposure.
PCB's	Glass epoxy FR-4 grade with UVLO-94 tested at source
Bird Spike	Integrated with main dome to avoid bird menace
Ingress protection degree	IP66 (total dust and water tight in accordance with IS:4691-195, IEC Pub 947-1(1983)
Product weight and shipping weight	1Kg / 1.3kg
Mounting	3/4" BSP threaded hub at the bottom
Optical & Electrical Characteristics	
Light Engine	Ultra high intensity UV stabilized outdoor application AIGAP LEDs
Light color	RED color with CIE(Commission Internationale de L'Eclairage) Chromaticity chart standards & required wave length
Intensity	Type-B >45Cd omni directional and upto 15degrees vertical
Product compliance	In accordance with ICAO Annex-14 Volume-I Third Edition Aerodrome Design & Operations low intensity Type-B aviation lamp requirements
Gaskets	EPDM gasket treated for all weather, anti cracking and ozone resistant
Hardware's	Stainless steel
Lamp life	1,00,000 burning hours
Day Night switch	Inbuilt Automatic day/night redundant sensor switch with ASBS* technology
Power Supply Management	iPED** technology
Input Voltage Range AC	70 - 270V AC
Wattage	4 Watts Max
Connectivity internal	Wireless modular LED Light Engine module construction to comply vibration proof system

Mains Terminal Connection	Self contained IP66 Terminal box with solid 5A/300V connector with M20 polyamide cable Gland and terminal cover arrangement suitable upto 2.5sq.mm copper cable
Certification	Si'Tarc NABL accredited lab recognized by DSIR/Ministry of science & Technology and BIS. Instituted by Govt.of India and UNDP Test Report No. Z - 2895
Redundancy	Three circuit series parallel redundant
Operating temperature range	-10deg to +55deg (Ref: IS 9000 part3/sec5)
Insulation resistance at 500V DC	500X10 ³ Meg.Ohms
Di-Electric strength withstand	1KV for 1 minute
Salt Mist test	8hrs (Ref: IS 9000 Part xi)1983
Patents and Trade Marks	Design Patent applied and <i>RAY DYNAMICS</i> is a registered Trade Mark
Model / CAT No	LIT32-UI
** /PED - intelligent Power Enhanced Driver(Dedicated SMPS) - ensures constant voltage and current to LED light engine which enhances the life of LEDs.	
*ASBS - Active Stand-By Technology which ensures the fail safe operation of day night sensing.In case one sensor fail automatically other takes over.	

Note: Above specifications are subject to change due to continuous technical progress and up gradation – Ray Dynamics

RAY DYNAMICS

SWITCH TO NEXT GENERATION LIGHTING